

Quick User Guide for Autel MaxiChargers

AC Wallbox

Content:

1. Useful information

2. Installations

Part 1, Install the charger on the wall

Part 2, AC cables installation

Part 3, AC 3-phase plug installation

Part 4, Connecting the chargers with Autel MaxiCharger App

3. FAQs

4. Technical Support

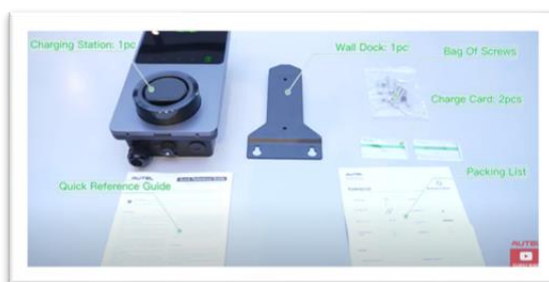
1. Useful information:

- [User Manual](#) & [Installation Manual](#)
- [Official website](#)
- [Installation video](#)

2. Installations:

Part 1, Install the charger on the wall:

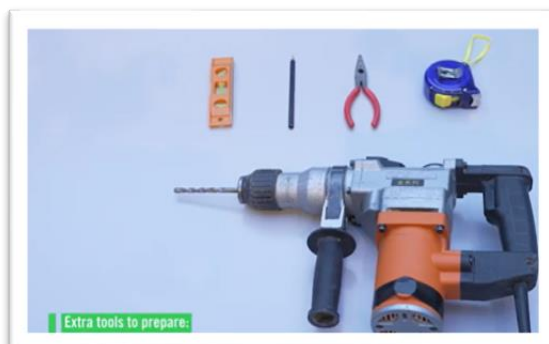
1. Unboxing



2. Wall mounting kit



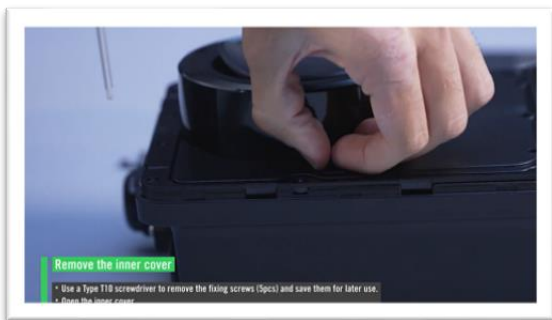
3. Extra tools (not included with the charger)



4. Remove the outer cover of the charger



5. Remove the inner cover (unscrew the 5 screws)



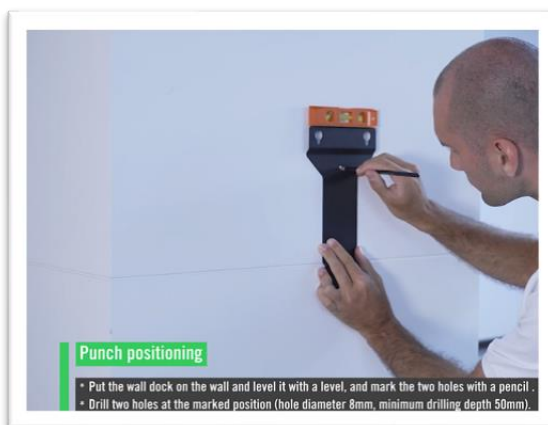
6. Open the inner cover



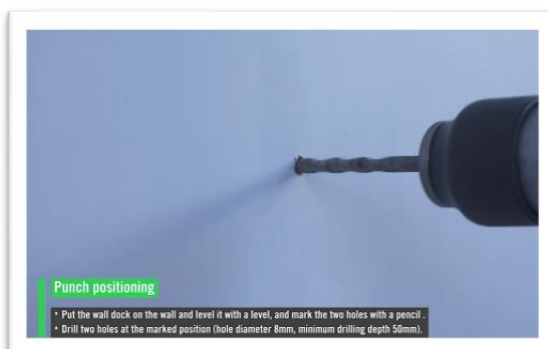
7. Mark an installation height (140 cm) on the wall



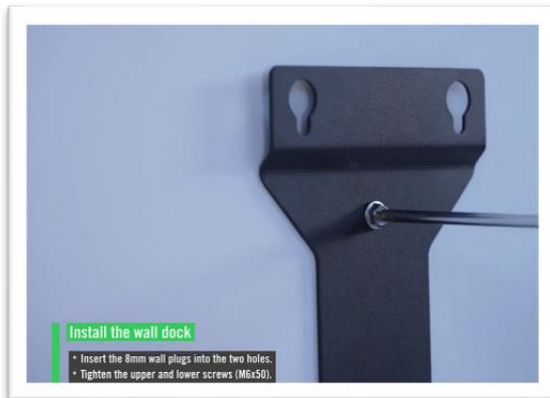
8. Punch position, the lowest part is at 140 cm, and then mark two holes (one is under the installer's left hand)



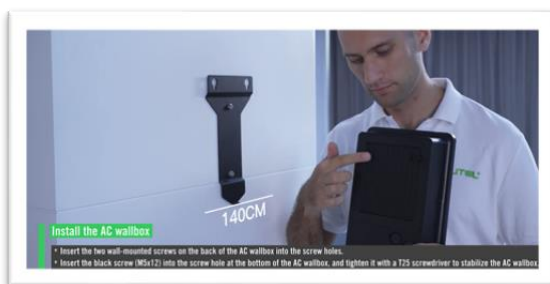
9. Drill two holes at the marked position (hole diameter 8mm, >50mm depth)



10. Insert the 8mm wall plugs into the two holes and screw them (M6*50 screws) tight

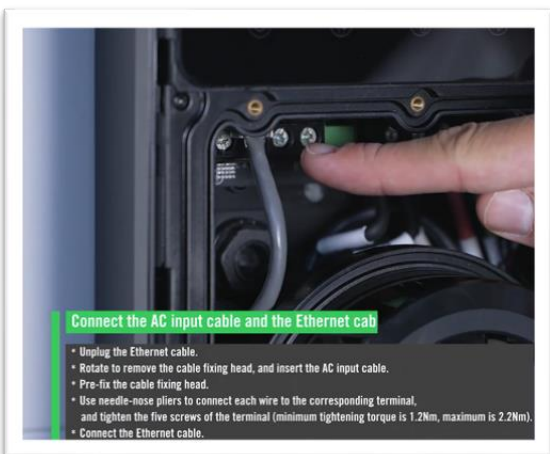


11. Insert two wall-mounted screws (metal color) into the screws holes on the back of the charger (upper part); and insert one screw (black color, M5*12) into the screw hole at the lower part of the charger



Part 2, AC cables installation

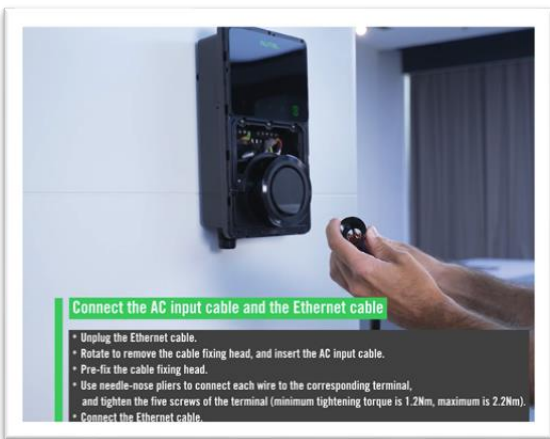
1. Unplug the Ethernet cable



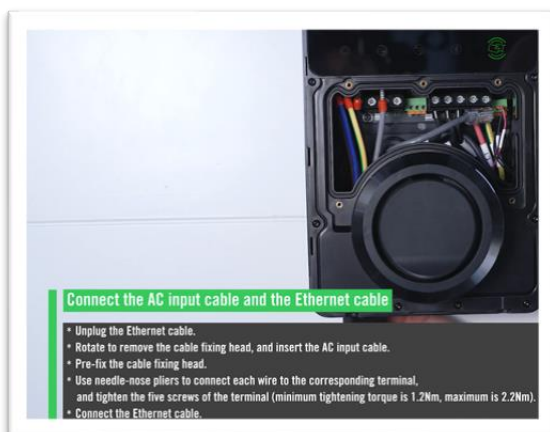
2. Rotate (clock-wise) to remove the cable fixing head



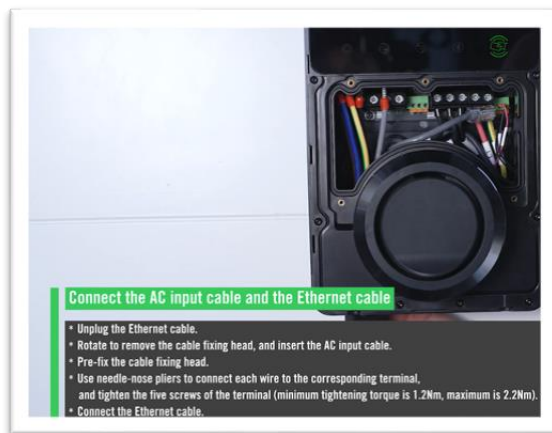
3. Insert the AC cables through the fixing head



4. Pre-fix the cable head (not very tight at the moment)



5. Use needle-nose pliers to connect each wire to the corresponding terminal



6. Connect all wire to the corresponding terminal and Ethernet cable
*2'22''-2'48'' in the [installation video](#) for every step of the 3-phase installation



From 2'50'' for single-phase installation (below)



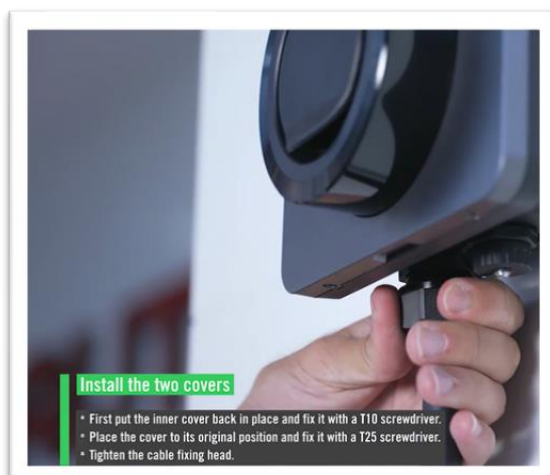
7. Put back on the inner cover (5 screws)



8. Put back on the outer cover (2 screws)

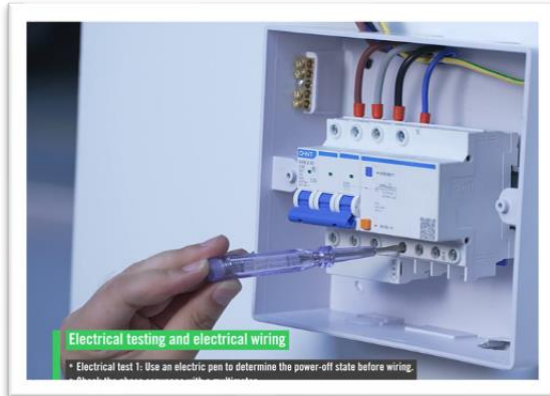


9. Tighten the AC cable fixing head



10. Electrical Testing 1 and electrical wiring

- a. Use an electric pen to determine the power-off state before wiring
- b. Check the phase sequence with a multimeter

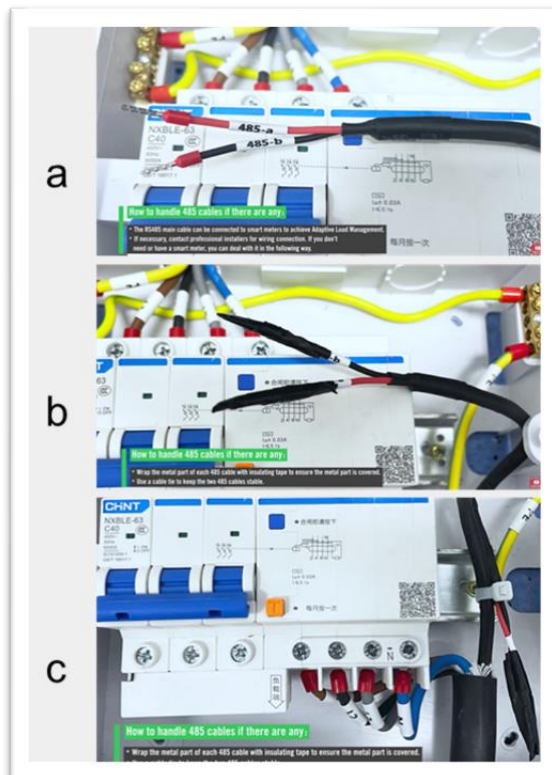


11. Connect the AC input cable in the power-off state



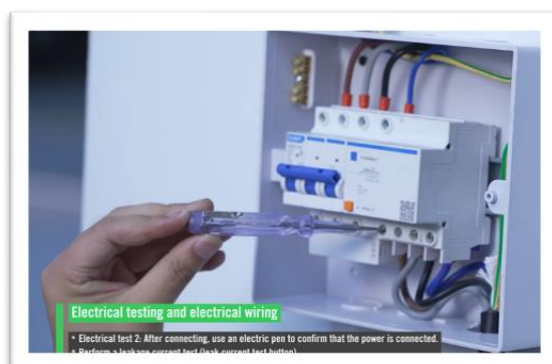
12. Handle RS485 cables if there are any

- a. The RS485 cables can be connected to smart meters to achieve Adaptive Load Management
- b. Use insulating tape to cover the metal part of the RS485 cables if they are not in use
- c. Use a cable tie to the 485 cables stable

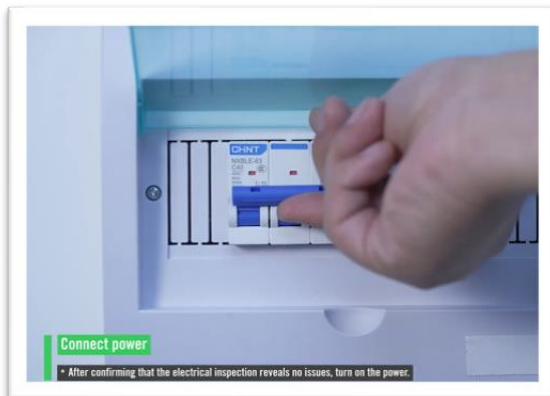


13. Electrical Testing 2 and electrical wiring

- d. Use an electric pen to confirm that the power is connected
- e. Perform a leakage current test (leak current test bottom)

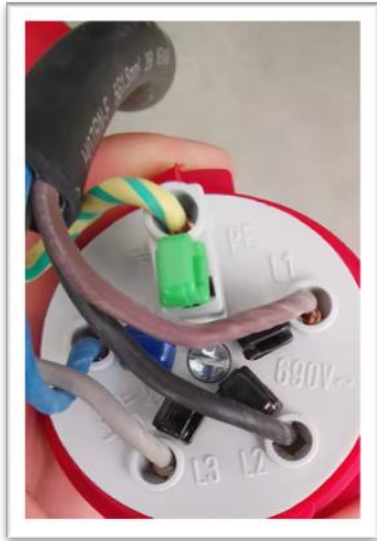


14. Turn on the power, if there is no issue confirmed after the electrical inspections



Part 3, AC 3-phase plug installation

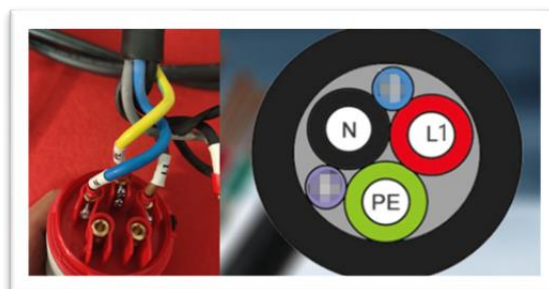
1. The 22kW charger requires the customer to use a 32A **3-phase** plug to provide input by default.
 - a. There are 7 pins of our AC EV Charger, for the two 485 Pins are used for AC energy meter connection, and they can be connected with energy center controller when needed, for now, when they are not in use, it would be good to cover them by insulating tape (see previous section point no. 12).
 - b. If the power supply system of the user only supports 16A or smaller, one needs to connect the charger to the mobile APP and set the current limitation to 16A or to the corresponding level before connecting to the EV
2. For the other 5 pins, with names: L1, L2, L3, N, and PE, just connect to the plug correspondingly (see photo below):



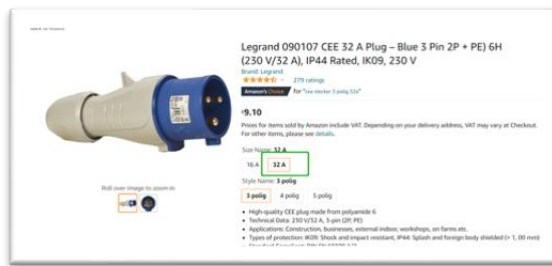
3. One can buy the plug with 5 pins from [Amazon](#)



4. IN CASE you have a **7kw charger**, and the power supply is a **32A single-phase** system, you would need to connect only the **L1, N, PE** to the plug (see photo below, left; schematic representation, right).



5. Users can buy the plug with 3 pins from [Amazon](#) (see the hyperlink and a picture below)



Please pay attention to the **7kW charger** with a **single-phase** current system, in order to achieve 7kW power, one needs to have a **current output of 32A**, therefore when you buy the plug with 3 pins from Amazon, please make sure to choose 32A type, if you order a 16A plug with 3 pins, the charger could not guarantee the 7kW charging power.

6. If you, the user has only an ordinary socket, one can change it by connecting **L1**, **N**, **PE**, and make sure to set the current to be less than 10A in the APP's setting. At the moment, the 3-phase EV charger (22kW version) is compatible with a single-phase input.

Attention!

7. Make sure to hire a qualified electrician to complete the installation of the EV charger, because the voltage and current used by the charger are much higher than the voltage and current that the human body can withstand. In addition, if the installation is not followed the standardized procedure, it may cause a fire due to overload and overheating. So please be cautious to this point.
8. Before installing the EV charger, please make sure that an electrician has confirmed the values and terminals of the sockets, as well as the power supply in the building, are all appropriate. Also, make sure that there is no misconnection and missing connection when doing wiring.

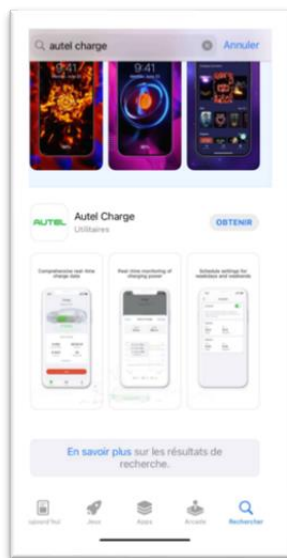
Part 4, Connecting the charger with Autel Charger App

Here are the steps for activating our chargers and using all the functions:

iOS

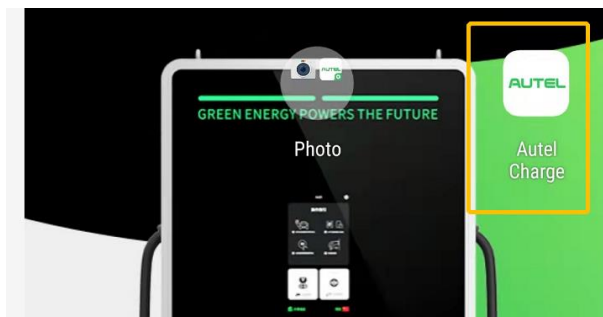


1. You can go to the APP store and Search "Autel Charge"

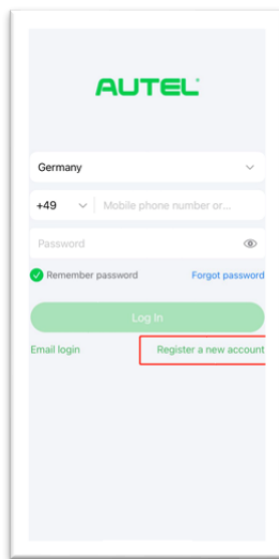


Android

1. You can go to the Google play store and Search "Autel Charge"
2. Click the App icon and enter the Autel Charge App

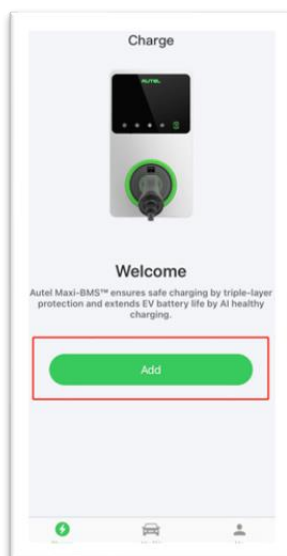


3. Register an Autel Account bounding your phone



4. Power up the EV charger. Please make sure your EV charger only connects to the electric supply and does not plug in the vehicle before all setting is done.

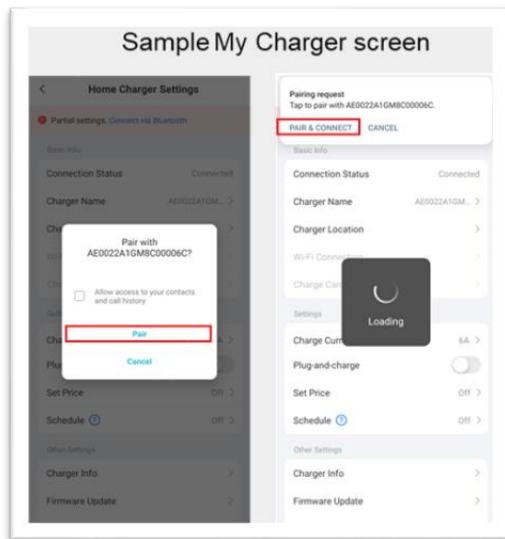
5. Bind Home Charger with your Account



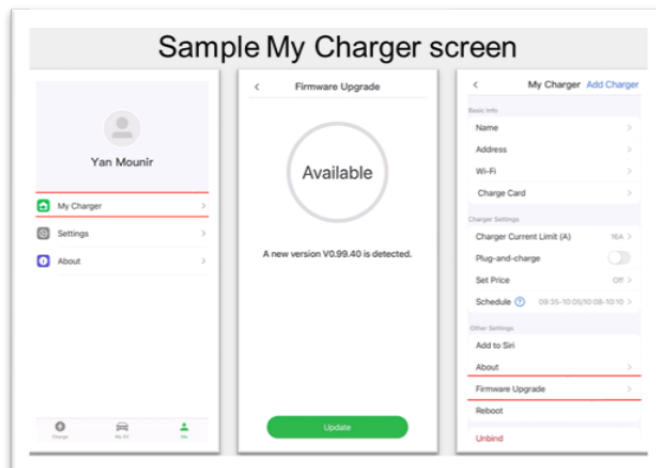
6. Type in or scan the PIN code or the S/N shown in the quick guide came with the package



7. Pair & Connect with the charger via Bluetooth



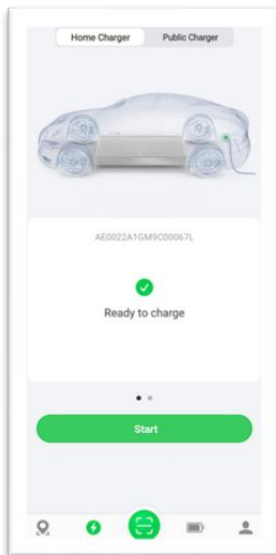
8. Update the firmware



9. Plug the charging gun into the EV



10. Press the "Start" button on the App to start the charging process.



3. FQA

Please find troubleshooting tables in section 4 in the [Installation Manual](#) and section 5 in the [User Manual](#) respectively.

4. Technical Support

Further information please contact: evsupport.eu@autel.com